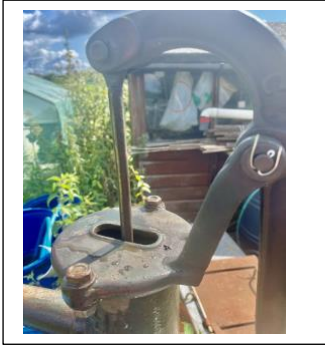


## Some help in replacing a pump washer for the Allotment

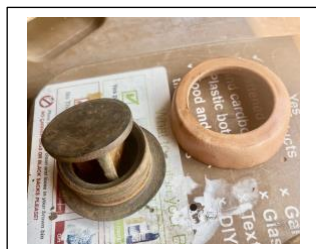
This is for the type of pump shown in the diagram



Remove the split pin /or bolt shown in the extreme left of the picture connecting the rod. Loosen and undo the two bolts holding the lid on the pump. Avoid dropping them in your water butt (personal experience). WD 40 etc the nuts and bolts.



Undo the bottom two bolts and lift the pump housing off the base – again be careful not to lose the nuts/bolts. You will hopefully see a plastic ring washer at the base of the housing and the leather washer which needs replacing.



The rod will be attached to the washer by a nut and bolt. The lower unit unscrews. It may need to be taken to a vice as it has rusted but it can be loosened with penetrating oil or WD40



Prior to dismantling the pump, the following can be ordered from Amazon. It is essential to make sure you know the diameter of your pump before ordering and order the correct washer size. Once you have dismantled the pump and attached the washer to the lower unit and the rod use a rubber mallet to gently tap to rod inside the pump housing. Do this from the top as it will not work trying to insert it from below. Replace the plastic washer on the pump base and get some help to hole the pump in place. Start to put the lower nuts and bolts back in place. Fit the rod through the top of the pump housing and put the top nuts and bots back in place. Reattach the rod to the handle with new split pins. You will probably have to prime the pump as before adding water through the gap. I am no engineer or handy man whatsoever but it worked for me and I hope it works for you?

Craig Plot 53